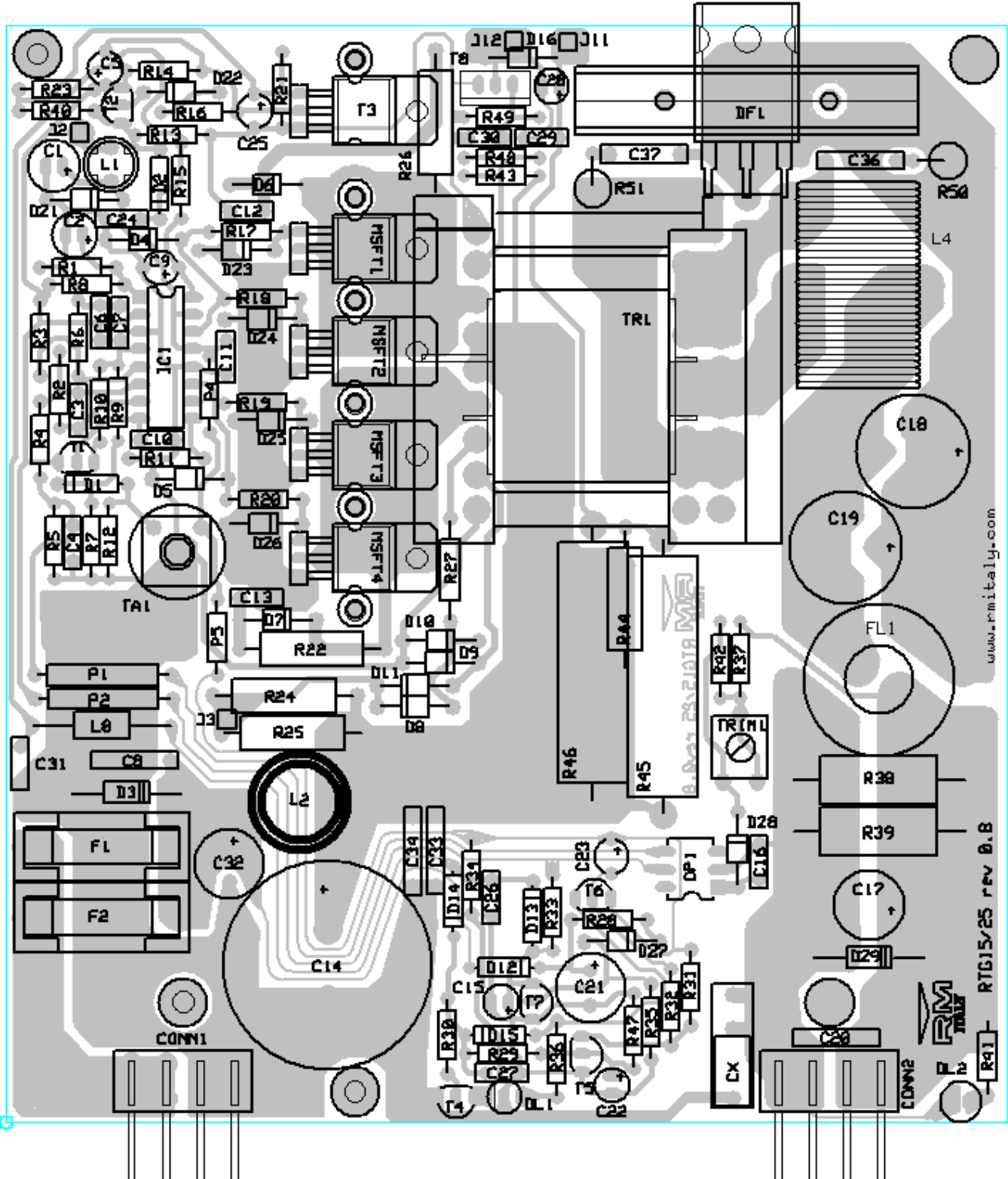


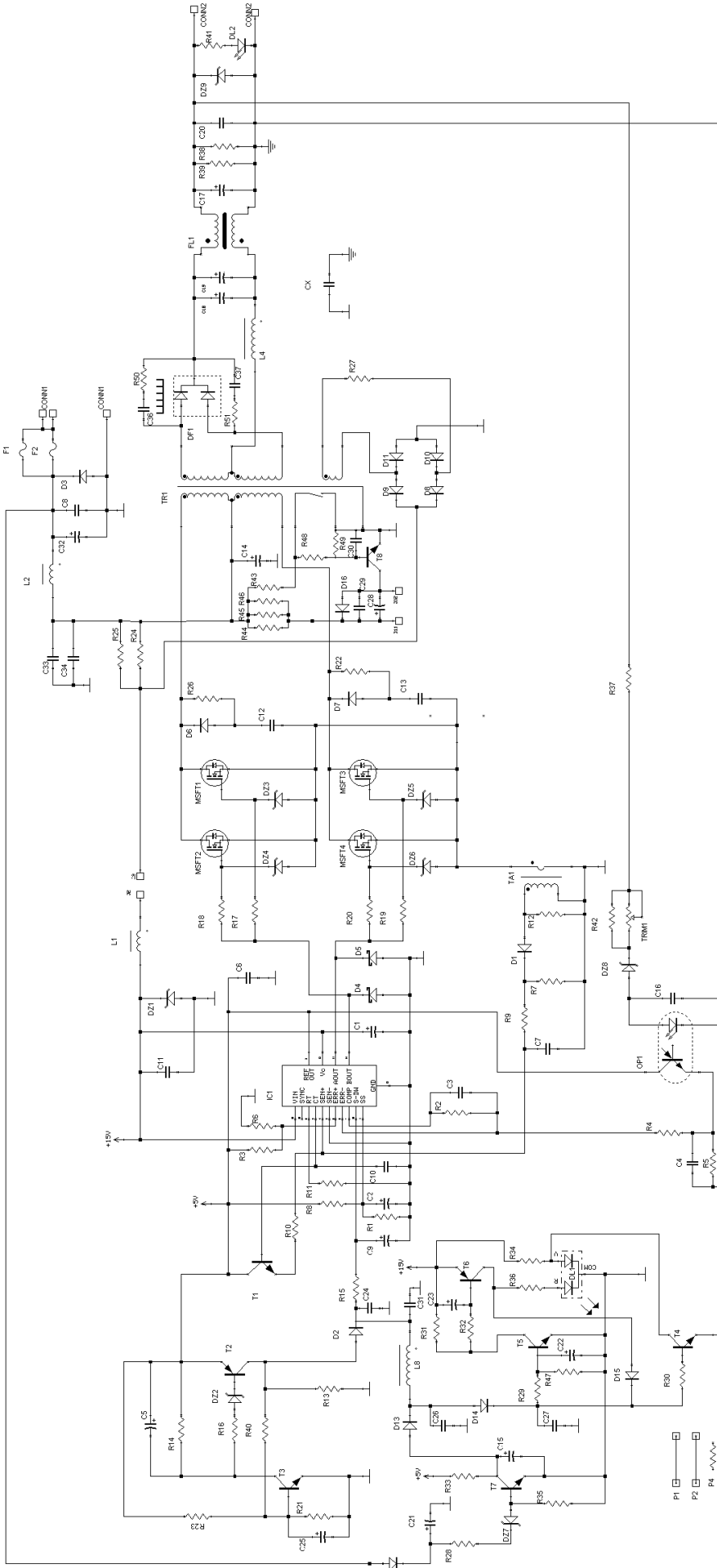


Mod. RTG 25-72 tension reducer

Schematic diagram

Version 1.00





List of components

C 1	=	100 μF	35 V
C 2	=	47 μF	16 V
C 3	=	2,2 nF	50 V Polyester
C 4	=	10 nF	50 V Polyester
C 5	=	4,7 μF	16 V
C 6	=	100 nF	50 V Polyester
C 7	=	470 pF	50 V Ceramic
C 8	=	10 nF	630 V Polyester
C 9	=	10 μF	25 V
C 10	=	2,2 nF	50 V Polyester
C 11	=	100 nF	50 V Polyester
C 12	=	1,0 nF	1000 V Ceramic
C 13	=	1,0 nF	1000 V Ceramic
C 14	=	100 μF	250 V 105 °C
C 15	=	4,7 μF	16 V
C 16	=	10 nF	50 V Polyester
C 17	=	470 μF	25 V 105 °C
C 18	=	2200 μF	35 V 105 °C
C 19	=	2200 μF	35 V 105 °C
C 20	=	100 nF	100 V Polyester
C 21	=	22 μF	250 V
C 22	=	10 μF	25 V
C 23	=	10 μF	25 V
C 24	=	100 nF	50 V Polyester
C 25	=	47 μF	16 V
C 26	=	100 nF	50 V Polyester
C 27	=	100 nF	50 V Polyester
C 28	=	10 μF	25 V
C 29	=	100 nF	50 V Polyester
C 30	=	100 nF	50 V Polyester
C 31	=	100 nF	50 V Polyester
C 32	=	22 μF	200 V
C 33	=	2,2 nF	250 V Polyester
C 34	=	10 nF	630 V Polyester
C 36	=	10 nF	630 V Polyester
C 37	=	10 nF	630 V Polyester
C x	=	4,7 nF	250 V Y1
R 1	=	47 KΩ	¼ W
R 2	=	100 KΩ	¼ W
R 3	=	4,7 KΩ	¼ W
R 4	=	10 KΩ	¼ W
R 5	=	1,0 KΩ	¼ W
R 6	=	4,7 KΩ	¼ W
R 7	=	22 Ω	¼ W
R 8	=	10 KΩ	¼ W
R 9	=	1,0 KΩ	¼ W
R 10	=	2,7 KΩ	¼ W
R 11	=	12 KΩ	¼ W
R 12	=	10 KΩ	¼ W

R 13 =	4,7 K Ω	¼ W	D 10 =	BYV26E
R 14 =	2,7 K Ω	¼ W	D 11 =	BYV26E
R 15 =	4,7 K Ω	¼ W	D 12 =	1N 4148
R 16 =	22 K Ω	¼ W	D 13 =	1N 4148
R 17 =	not present		D 14 =	1N 4148
R 18 =	22 Ω	¼ W	D 15 =	1N 4148
R 19 =	not present		D 16 =	1N 4007
R 20 =	22 Ω	¼ W	DF 1 =	MBR 3045
R 21 =	3,3 K Ω	¼ W	Dz 1 =	20 V 1,3 W
R 22 =	100 Ω	3 W	Dz 2 =	3,3 V ½ W
R 23 =	39 K Ω	¼ W	Dz 3 =	not present
R 24 =	3,3 K Ω	3 W	Dz 4 =	15 V 1,3 W
R 25 =	2,7 K Ω	3 W	Dz 5 =	not present
R 26 =	100 Ω	3 W	Dz 6 =	15 V 1,3 W
R 27 =	10 Ω	1 W	Dz 7 =	51 V 1,3 W
R 28 =	82 K Ω	¼ W	Dz 8 =	10 V 1,3 W
R 29 =	10 K Ω	¼ W	Dz 9 =	18 V 5 W
R 30 =	10 K Ω	¼ W	DL 1 =	Dual-color LED
R 31 =	4,7 K Ω	¼ W	DL 2 =	Green LED
R 32 =	22 K Ω	¼ W	Op 1 =	CNY-17
R 33 =	4,7 K Ω	¼ W	U 1 =	UC3846
R 34 =	1,0 K Ω	¼ W	T 1 =	BC 337-25
R 35 =	8,2 K Ω	¼ W	T 2 =	BC 327-25
R 36 =	1,0 K Ω	¼ W	T 3 =	TIP 29C
R 37 =	180 Ω	¼ W	T 4 =	BC 337-25
R 38 =	68 Ω	5 W	T 5 =	BC 337-25
R 39 =	68 Ω	5 W	T 6 =	BC 327-25
R 40 =	330 K Ω	¼ W	T 7 =	BC 337-25
R 41 =	1,0 K Ω	¼ W	MSFT 1 =	not present
R 42 =	1,0 K Ω	¼ W	MSFT 2 =	IRF 640
R 43 =	10 K Ω	¼ W	MSFT 3 =	not present
R 44 =	not present		MSFT 4 =	IRF 640
R 45 =	820 Ω	7 W	F 1 =	Fuse 8 A
R 46 =	820 Ω	7 W	F 2 =	not present
R 47 =	6,8 K Ω	¼ W	TA 1 =	Sens. Corr.
R 48 =	15 K Ω	¼ W	Tr 1 =	TRPP ETD44-72
R 49 =	10 K Ω	¼ W	L 1 =	1 mH
R 50 =	10 Ω	2 W	L 2 =	10 μ H 30A
R 51 =	10 Ω	2 W	L 4 =	60 μ H
TRIM 1 =	4,7 K Ω	PT10	L 8 =	10 μ H
P 1 = P 2 = P 4 = P 5 =	Bridge 0 Ω		FL 1 =	2 x 25 μ H
D 1 =	1N 4148			
D 2 =	1N 4148			
D 3 =	1N 5402			
D 4 =	BAT 49			
D 5 =	BAT 49			
D 6 =	BYV26E			
D 7 =	BYV26E			
D 8 =	BYV26E			
D 9 =	BYV26E			