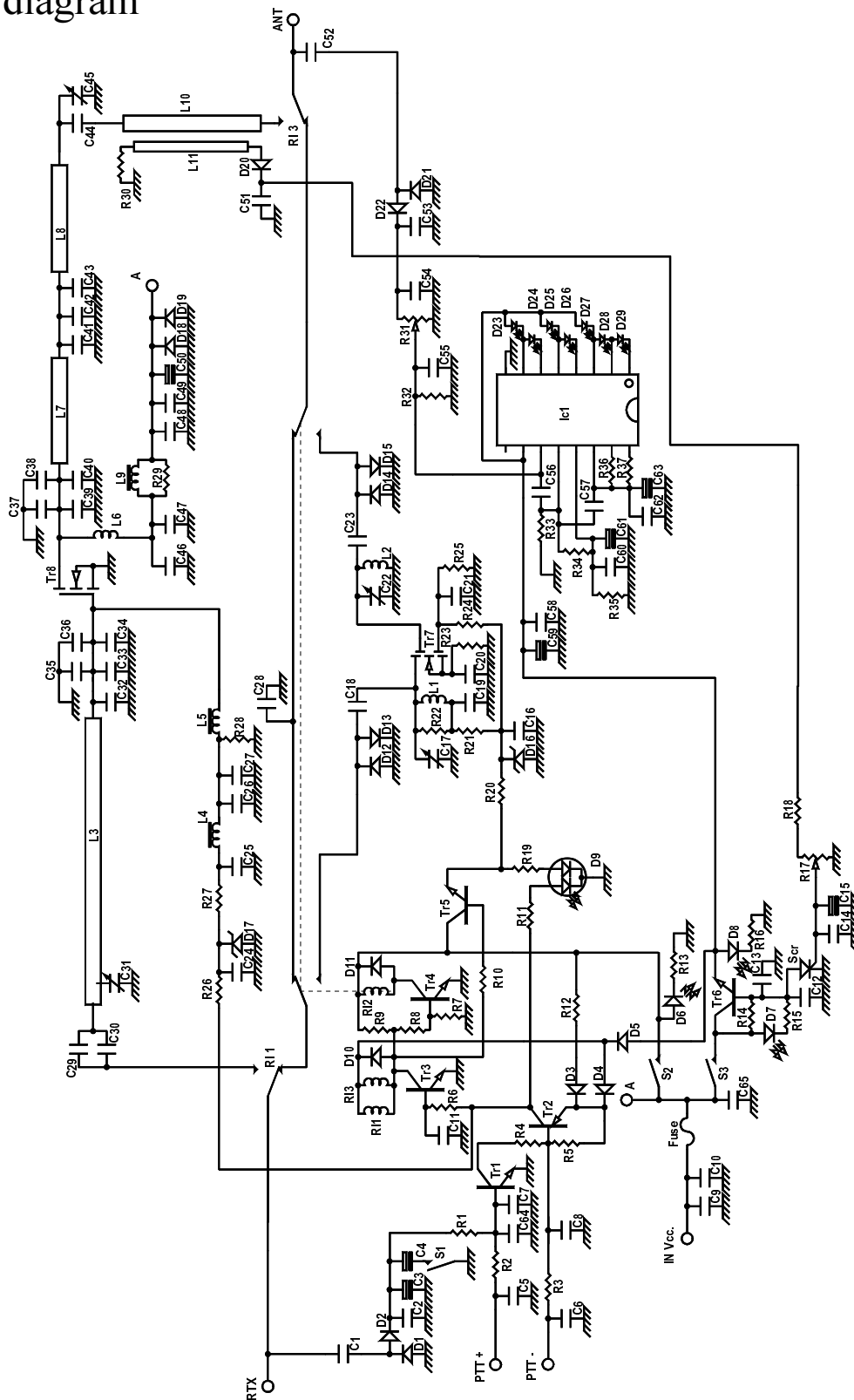
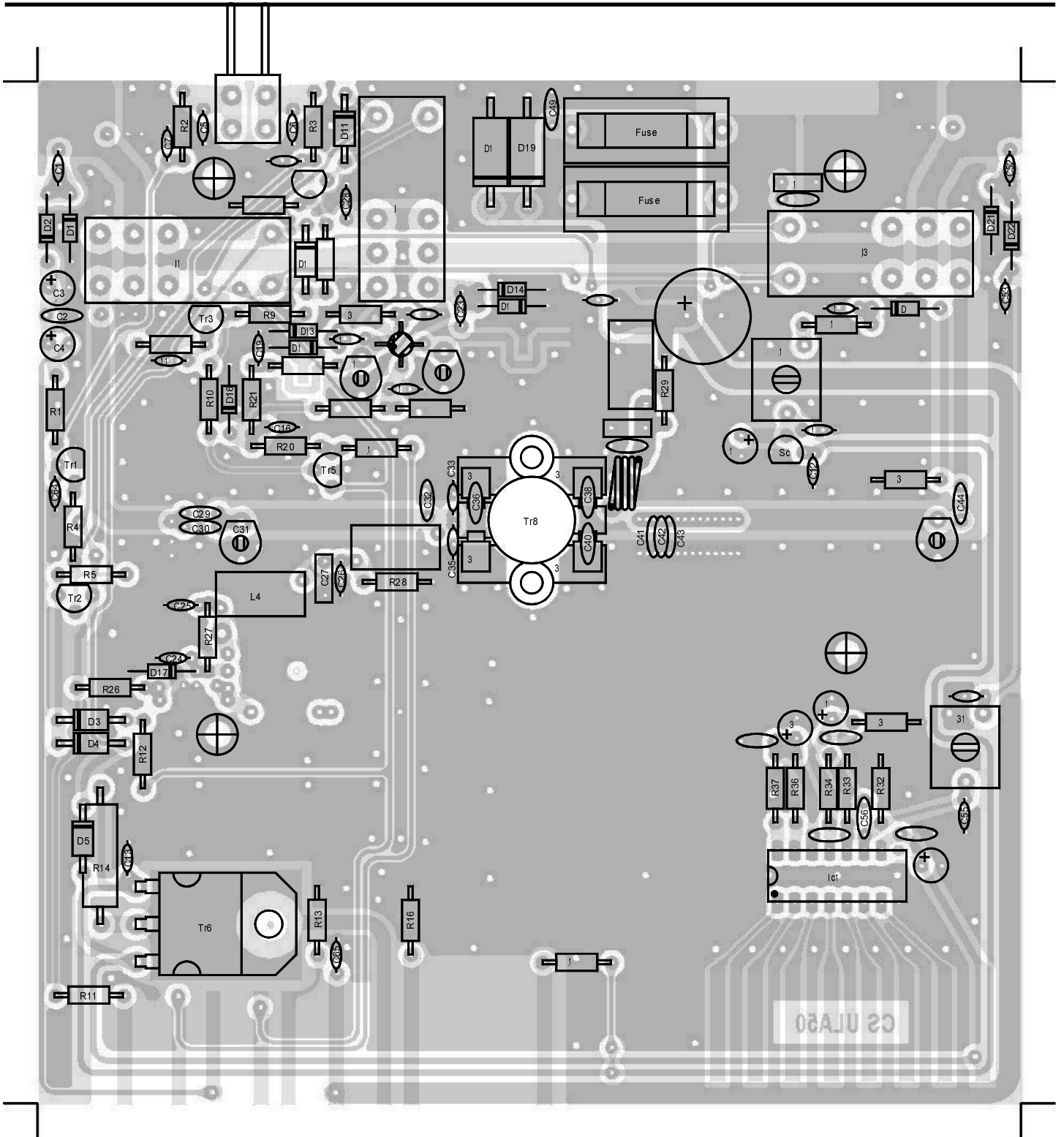


# Mod. ULA 50 UHF linear amplifier

Schematic diagram

Version 1.01





**List of components**

C 1	=	1,8 pF	50 V	NP0		
C 2	=	1,0 nF	50 V			
C 3	=	4,7 $\mu$ F	25 V			
C 4	=	33 $\mu$ F	25 V			
C 5	=	1,0 nF	50 V			
C 6	=	1,0 nF	50 V			
C 7	=	1,0 nF	50 V			
C 8	=	1,0 nF	50 V			
C 9	=	100 nF	50 V			
C 10	=	220 nF	63 V			Multilayer
C 11	=	1,0 nF	50 V			
C 12	=	1,0 nF	50 V			
C 13	=	1,0 nF	50 V			
C 14	=	1,0 nF	50 V			
C 15	=	10 $\mu$ F	25 V			
C 16	=	1,0 nF	50 V			

C 17 =	Trimmer 2 - 5 pF	NP0	R 1 =	2,2 K $\Omega$	¼ W
C 18 =	2,2 pF 50 V	NP0	R 2 =	2,2 K $\Omega$	¼ W
C 19 =	1,0 nF 50 V		R 3 =	2,2 K $\Omega$	¼ W
C 20 =	1,0 nF 50 V		R 4 =	2,2 K $\Omega$	¼ W
C 21 =	1,0 nF 50 V		R 5 =	270 $\Omega$	¼ W
C 22 =	Trimmer 3 - 10 pF	NP0	R 6 =	2,2 K $\Omega$	¼ W
C 23 =	2,2 pF 50 V	NP0	R 7 =	22 K $\Omega$	¼ W
C 24 =	1,0 nF 50 V		R 8 =	12 K $\Omega$	¼ W
C 25 =	1,0 nF 50 V		R 9 =	4,7 K $\Omega$	¼ W
C 26 =	1,0 nF 50 V		R 10 =	2,2 K $\Omega$	¼ W
C 27 =	220 nF 63 V	Multilayer	R 11 =	1,0 K $\Omega$	¼ W
C 28 =	1,8 pF 50 V	NP0	R 12 =	2,2 K $\Omega$	¼ W
C 29 =	47 pF 50 V	NP0	R 13 =	1,0 K $\Omega$	¼ W
C 30 =	47 pF 50 V	NP0	R 14 =	330 $\Omega$	2 W
C 31 =	Trimmer 3 - 10 pF	NP0	R 15 =	1,0 K $\Omega$	¼ W
C 32 =	33 + 12 pF 500 V	NP0	R 16 =	1,0 K $\Omega$	¼ W
C 33 =	10 pF 50 V	NP0	R 17 =	Trimmer 4,7 K $\Omega$	
C 34 =	2 x 33 pF 300 V	Mica	R 18 =	2,2 K $\Omega$	¼ W
C 35 =	10 pF 50 V	NP0	R 19 =	1,0 K $\Omega$	¼ W
C 36 =	12 pF 500 V	NP0	R 20 =	470 $\Omega$	¼ W
C 37 =	33 pF 300 V	Mica	R 21 =	150 $\Omega$	¼ W
C 38 =	8,2 pF 500 V	NP0	R 22 =	1,0 K $\Omega$	¼ W
C 39 =	33 pF 300 V	Mica	R 23 =	10 $\Omega$	¼ W
C 40 =	8,2 pF 500 V	NP0	R 24 =	6,8 K $\Omega$	¼ W
C 41 =	3,9 pF 50 V	NP0	R 25 =	3,3 K $\Omega$	¼ W
C 42 =	8,2 pF 500 V	NP0	R 26 =	1,0 K $\Omega$	¼ W
C 43 =	3,3 pF 50 V	NP0	R 27 =	8,2 K $\Omega$	¼ W
C 44 =	47 pF 500 V	NP0	R 28 =	4,7 K $\Omega$	¼ W
C 45 =	Trimmer 3 - 10 pF	NP0	R 29 =	10 $\Omega$	¼ W
C 46 =	220 nF 63 V	Multilayer	R 30 =	100 $\Omega$	¼ W
C 47 =	100 pF 500 V	NP0	R 31 =	Trimmer 220 K $\Omega$	
C 48 =	1,0 nF 50 V		R 32 =	4,7 K $\Omega$	¼ W
C 49 =	1,0 nF 50 V		R 33 =	1,0 K $\Omega$	¼ W
C 50 =	470 $\mu$ F 25 V		R 34 =	1,0 K $\Omega$	¼ W
C 51 =	1,0 nF 50 V		R 35 =	1,0 K $\Omega$	¼ W
C 52 =	2,2 pF 50 V	NP0	R 36 =	22 K $\Omega$	¼ W
C 53 =	1,0 nF 50 V		R 37 =	10 K $\Omega$	¼ W
C 54 =	1,0 nF 50 V		D 1 =	1N 4148	
C 55 =	1,0 nF 50 V		D 2 =	A118	
C 56 =	10 nF 50 V		D 3 =	1N 4004	
C 57 =	10 nF 50 V		D 4 =	1N 4004	
C 58 =	10 nF 50 V		D 5 =	1N 4004	
C 59 =	10 $\mu$ F 25 V		D 6 =	Yellow LED	
C 60 =	10 nF 50 V		D 7 =	Red LED	
C 61 =	4,7 $\mu$ F 25 V		D 8 =	Green LED	
C 62 =	10 nF 50 V		D 9 =	Dual color LED	
C 63 =	10 $\mu$ F 25 V		D 10 =	1N 4004	
C 64 =	1,0 nF 50 V		D 11 =	1N 4004	
C 65 =	1,0 nF 50 V		D 12 =	1N 4148	

---

D 13	=	1N 4148
D 14	=	1N 4148
D 15	=	1N 4148
D 16	=	Zener 5,1 V ½ W
D 17	=	Zener 7,5 V ½ W
D 18	=	1N5400
D 19	=	1N5400
D 20	=	1N 4148
D 21	=	1N 4148
D 22	=	1N 4148
D 23	=	Green LED
D 24	=	Green LED
D 25	=	Green LED
D 26	=	Green LED
D 27	=	Green LED
D 28	=	Green LED
D 29	=	Green LED
Tr 1	=	BC 547
Tr 2	=	BC 327
Tr 3	=	BC 547
Tr 4	=	BC 547
Tr 5	=	BC 337
Tr 6	=	TIP 142
Tr 7	=	BF 966 S
Tr 8	=	MRF 5035
Scr	=	P 0102
Fuse	=	2 x 4 A
IC 1	=	KA 2288
L 1	=	Srtrip line
L 2	=	Srtrip line
L 3	=	Srtrip line
L 4	=	VK 200
L 5	=	VK 200
L 6	=	2 turns wire $\phi$ 1,2 mm on $\phi$ 6 mm
L 7	=	Srtrip line
L 8	=	Srtrip line
L 9	=	VK 200
L 10	=	Srtrip line
L 11	=	Srtrip line
RI 1	=	4052 - 12
RI 2	=	4052 - 12
RI 3	=	4052 - 12
S 1	=	Switch 3A (FM - SSB)
S 2	=	Switch 3A (Pre ON - OFF)
S 3	=	Switch 3A (Lin ON - OFF)