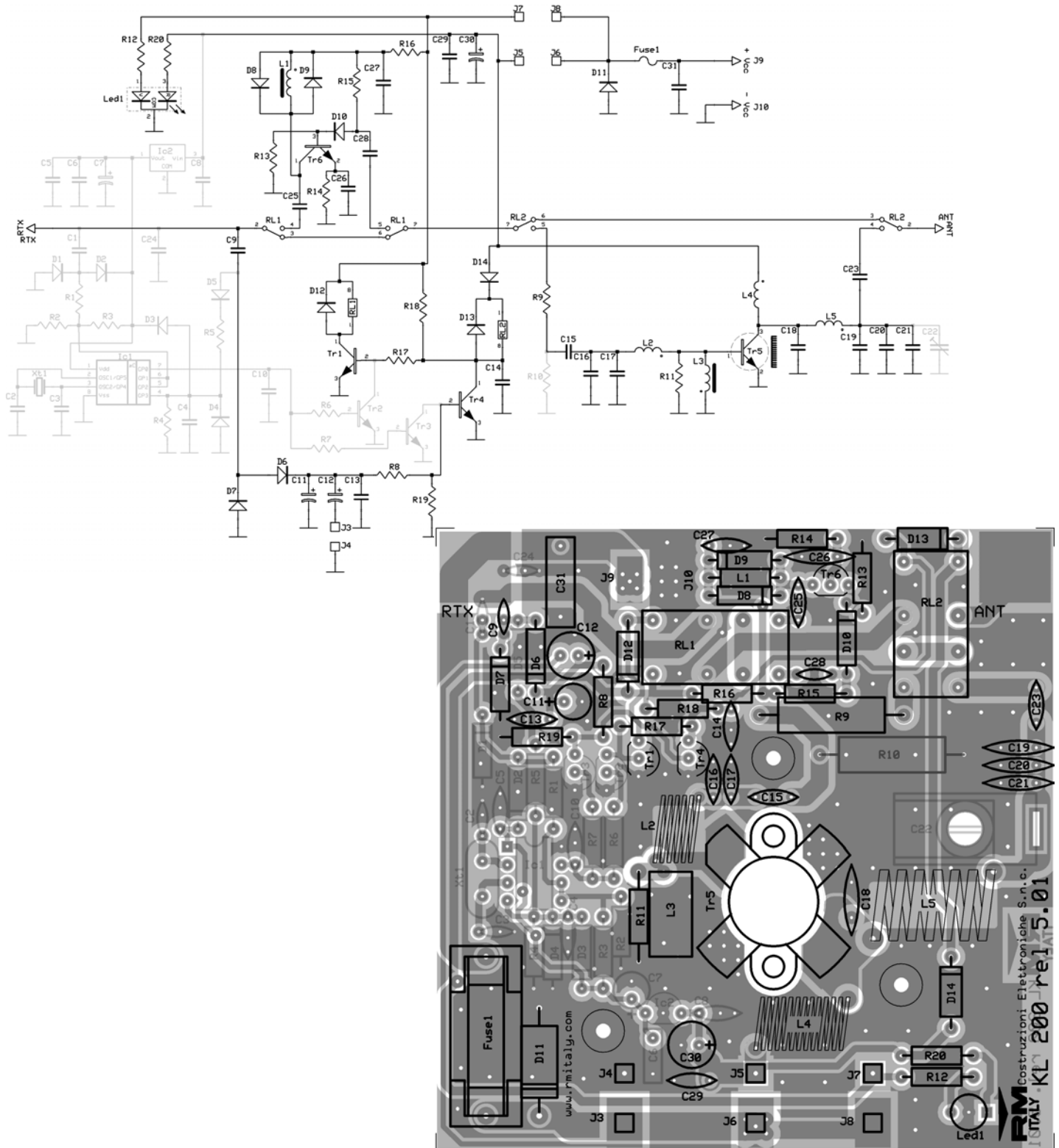


KL 200P-455 linear amplifier

Schematic diagram

Version 5.04



List of components

C ₉	= 8,2 pF	50 V	NP0
C ₁₁	= 4,7 μF	16 V	
C ₁₂	= 47 μF	16 V	
C ₁₃	= 100 nF	50 V	
C ₁₄	= 10 nF	50 V	
C ₁₅	= 100 pF	50 V	NP0
C ₁₆	= 220 pF	50 V	N750
C ₁₇	= 270 pF	50 V	N750
C ₁₈	= 120 pF	500 V	NP0
C ₁₉	= 220 pF	500 V	N750
C ₂₀	= 270 pF	500 V	N750
C ₂₁	= 120 pF	500 V	NP0
C ₂₃	= 1,0 nF	500 V	
C ₂₅	= 150 pF	50 V	NP0
C ₂₆	= 470 pF	50 V	N750
C ₂₇	= 10 nF	50 V	
C ₂₈	= 56 pF	50 V	NP0
C ₂₉	= 100 nF	50 V	
C ₃₀	= 100 μF	25 V	
C ₃₁	= 470 nF	100 V	Polyester
R ₈	= 4,7 KΩ	¼W	
R ₉	= 15 Ω	2W	
R ₁₀	= not present		
R ₁₁	= 10 Ω	½W	
R ₁₂	= 1,0 KΩ	¼W	
R ₁₃	= 2,2 KΩ	¼W	
R ₁₄	= 100 Ω	¼W	
R ₁₅	= 12 KΩ	¼W	
R ₁₆	= 100 Ω	¼W	
R ₁₇	= 12 KΩ	¼W	
R ₁₈	= 10 KΩ	¼W	
R ₁₉	= 2,2 KΩ	¼W	
R ₂₀	= 1,0 KΩ	¼W	
D ₆	= 1N4148		
D ₇	= 1N4148		
D ₈	= 1N4148		
D ₉	= 1N4148		
D ₁₀	= 1N4148		
D ₁₁	= 1N5400		
D ₁₂	= 1N4007		
D ₁₃	= 1N4007		
D ₁₄	= 1N4007		
Led ₁	= Led bicolore		
TR ₁	= BC 547		
TR ₄	= BC 547		
TR ₅	= MS 1051		
TR ₆	= BF 199		
L ₁	= 10 μH		

L ₂	= ANRA 289
L ₃	= VK200
L ₄	= ANRA 455
L ₅	= ANRA 289/3
RI ₁	= Relè 12 V 3022.7.012
RI ₂	= Relè 12 V 3022.7.012
Fuse	= 12 A