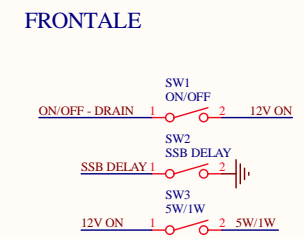
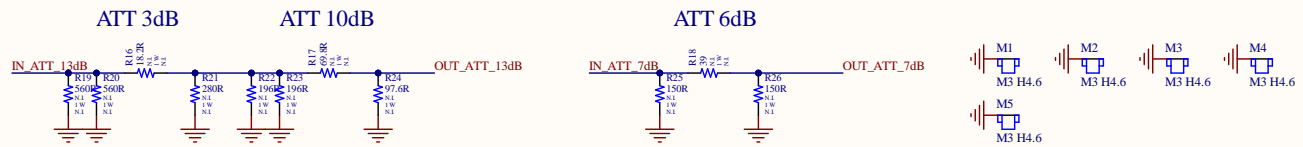


560R 560R 18.7R 280R -->3.1571dB 50.33ohm 200R 200R 68R 100R -->9.6287dB 50.3718ohm 130R 45.3R 130R 7.0556dB -- 50.0769ohm  
 560R 560R 18.2R 280R -->3.115dB 49.6769ohm 196R 196R 69.8R 97.6R -->9.7820dB 50.006ohm 150R 39R 150R 6.1351dB -- 50.8773ohm





LA135 UHF - REV.03 - FEB 2023

5W/1W

SSB DELAY

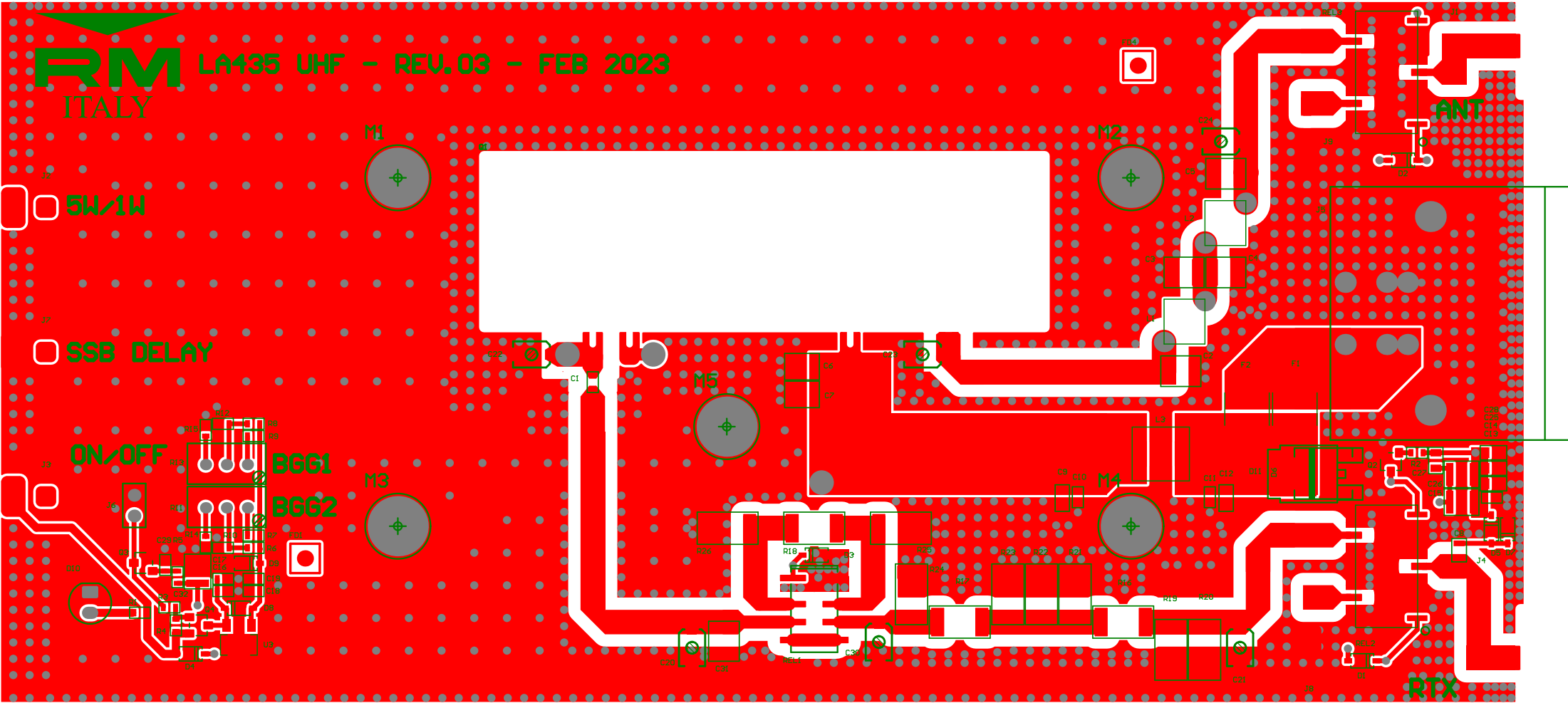
ON/OFF

BGG1

BGG2

ANT

RTX



Item #	Designator	Description	Comment
1	C1, C10, C11, C13	Cap 1nF+/-10%; 50V; Case 0603; X7R	1nF
2	C2	Cap 5,6pF+/-0,25pF; 500V; High Q; Case 1111; Low ESR/ESL	5,6pF
3	C3	Cap 1111	8,2pF
4	C4	Cap 4,7pF+/-0,25pF; 500V; High Q; Case 1111; Low ESR/ESL	4,7pF
5	C5	Cap 6,8pF+/-0,25pF; 500V; High Q; Case 1111; Low ESR/ESL	6,8pF
6	C6, C7, C15, C26, C32	Cap 22uF+/-10%; 16V; Case 1210; X7R	22uF
7	C8	Cap 0,6pF+/-0,05pF; 250V; High Q; Case 0805(600F); Low ESR/ESL	0,6pF
8	C9, C12, C14, C25, C27, C28	Cap 4,7uF+/-10%; 25V; Case 0805; X7R	4,7uF
9	C16, C19	Cap 10nF+/-10%; 50V; Case 0603; X7R	10nF
10	C17, C18, C29	Cap 100nF+/-10%; 50V; Case 0603; X7R	100nF
11	C20, C21, C22, C23, C24, C30	Trimmer CAP 5-20pF	5-20pF
12	C31	Cap 12pF+/-5%; 500V; High Q; Case 1111; Low ESR/ESL	12pF
13	C?	Cap 2,2uF+/-20%; 100V; Case 1812; X7R	2,2uF
14	D1, D2, D3, D4, D5, D7, D8, D9	Schottky Diode BAS70; Vmax 70V; Imax 70mA; SOD123	BAS70
15	D6	DIODE ZENER 15V 3000W	SM30T18AY
16	D10	LED Red Waterclear; 5mm; Vf 2,0V; If 20mA; 150mcd	150mcd
17	D11	Diodi e raddrizzatori Schottky 35A If(AV) TO-252AE	V35PW10HM3/I
18	F1, F2	Fuse Fast-Acting; Case 2920; 24V; 7A	7A
19	J5	Conn Femmina 2 Poli 41A	Conn F 2P 41A
20	L1, L2	24nH Air Wire 1mm	24nH Air Wire 1mm
21	L3	Power Ind. 7x6 H1mm; Ind.0,47uH; Irms 18A; Isat 20A	
22	M1, M2, M3, M4, M5	Reverse Spacer; SMD; HD:3.2mm (M3); ID:4.2mm; OD:6mm; H:4.6mm	M3 H4.6
23	Q1	RF Power Modules	
24	Q2, Q3	NPN Digital Transistor; Vce+50V; Ic+100mA; Vcb+/-50V; SOT23	BCR135
25	Q4	PNP Digital Transistor; Vce-50V; Ic-100mA; Vcb+/-50V; SOT23	BCR185
26	R1, R4	Res Thick Film; 1K+/-1%; 1/16W; Case 0603; 50V	1K
27	R2	Res Thick Film; 2,2K+/-1%; 1/16W; Case 0603; 50V	2,2K
28	R3	Res Thick Film; 4,7K+/-1%; 1/16W; Case 0603; 50V	4,7K
29	R5	Res Thick Film; 10K+/-1%; 1/16W; Case 0603; 50V	10K
30	R6, R8, R10, R12	Res N.I.; 1/16W; Case 0603; 50V	N.I.
31	R7, R9, R14, R15	Res Thick Film; 430R+/-1%; 1/16W; Case 0603; 50V	430R
32	R11, R13	Res Trimmer; PTH 9,5x4,8mm H10+1,5mm 1KOHMS 10% 25TURN	1K
33	R16	Res N.I. 2512	18,2R
34	R17	Res N.I. 2512	69,8R
35	R18	Res N.I. 2512	39
36	R19, R20	Res N.I. 2512	560R
37	R21	Res N.I. 2512	280R
38	R22, R23	Res N.I. 2512	196R
39	R24	Res N.I. 2512	97,6R
40	R25, R26	Res N.I. 2512	150R
41	REL1	Bobina 12V POLARIZZATA, 2 Scambi da 1A 125VAC Relè a segnale basso - PCB SMT Short Ld NoLatch DPDT 12DC 140mW	G6J-2FS-Y-DC12
42	REL2, REL3	RELAY, SIGNAL, SPDT, 250VAC, 220VDC, 2A, HF3-56S	HF3-56S
43	SW1	Interruttore Nero 2pos Non serig	ON/OFF
44	SW2	Interruttore Nero 2pos Non serig	SSB DELAY
45	SW3	Interruttore Nero 2pos Non serig	5W/1W
46	U3	Regolatori di tensione lineari 8.0V 0,1A Positive	L78L08ACUTR